



## MAINLAND POINTE

Similar to the Aspen, the Berkley delivers on the Relaxed living space that you've been looking for. With approximately 2,025 square ft. the welcoming Foyer brings you to an open Great Room and Kitchen/Breakfast providing plenty of natural light. The Flex space will allow you to create an area that is best suitable for you and your family.

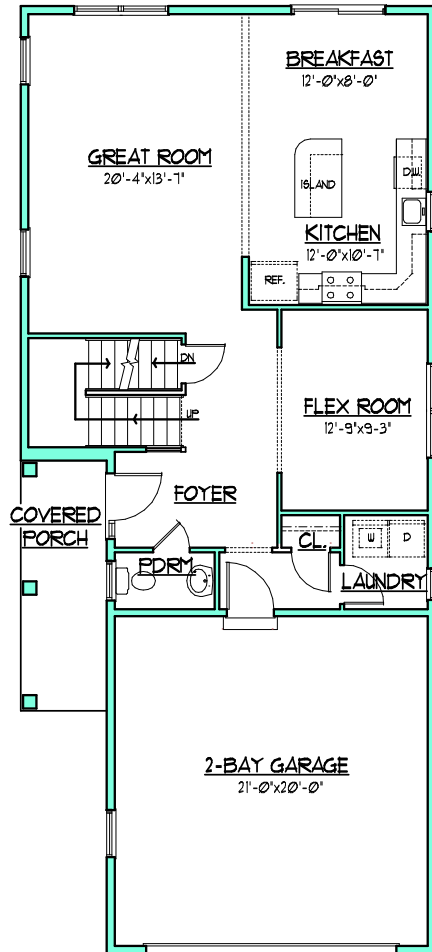
Second level offers the Master Bedroom with a full bath along with 2 Additional bedrooms and a full hall bath. Each Bedroom, as well as the Hall, has a walk-in closet giving you a generous amount of closet space!

# THE BERKLEY

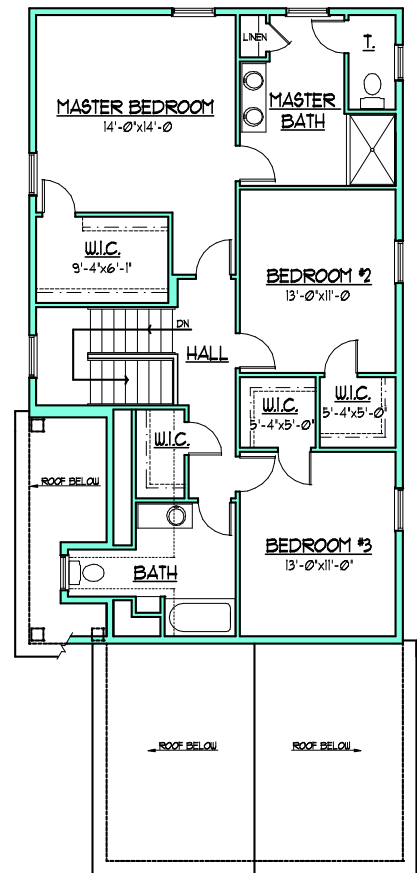
2,025 SF • 3 BEDROOMS • 2.5 BATHS



## MAIN LEVEL



## UPPER LEVEL



All information is deemed reliable but not guaranteed and is subject to change without notice. Front elevation may vary from the standard model. All floor plan dimensions are approximate & subject to field variations.

