



# THE BRIARWOOD

2,600 SF • 4 BEDROOMS • 2.5 BATHS

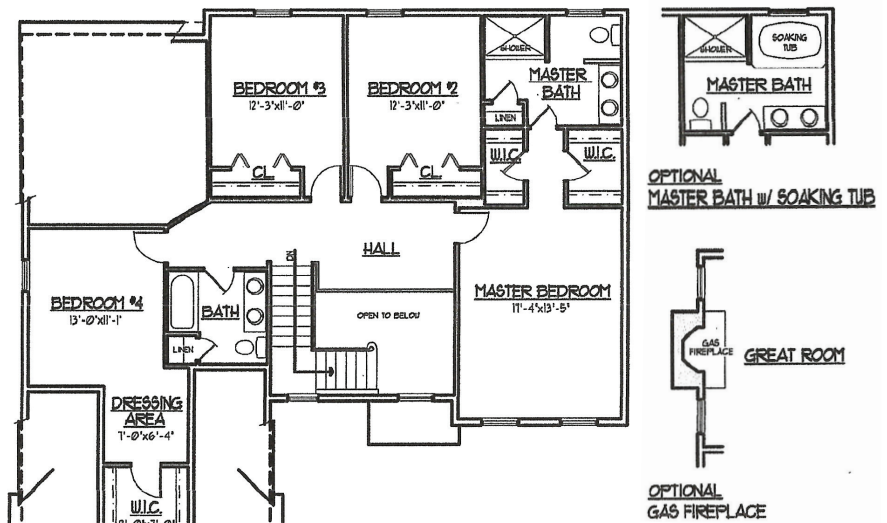
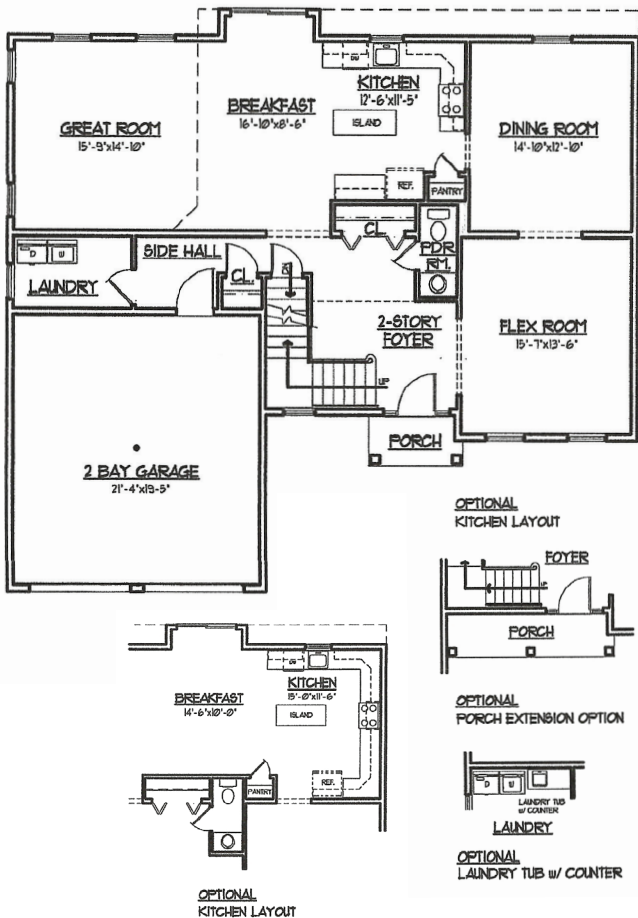
The Briarwood Model, with over 2,600 square Feet of living area offers ample Flex Space for designing to enhance your personal life style. The Dramatic 2 story foyer with turned staircase welcomes the lucky homeowner into a flowing Great Room, Breakfast Room, and Kitchen ideal for entertaining. The Laundry Room and Mud Room are conveniently located behind the garage. The Front Facing Flex Room is ideal for an office for those that work frequently from home.

The Upper Level boasts: 3 Bedrooms, Hall Bath, and a Master Bedroom with 2 walk in closets and full bath. Bedroom #4 has a sitting Room and Walk-in closet! Front Porch options and extended Kitchen options are available.



## MAIN LEVEL

## UPPER LEVEL



All information is deemed reliable but not guaranteed and is subject to change without notice. Front elevation may vary from the standard model. All floor plan dimensions are approximate & subject to field variations.



**JOHN GARIS HOMES, INC.**

527 Main Street, Harleysville, PA 19438