



# MAINLAND POINT

The Durham has over 2,600 square feet of Easy Living Space. First Floor Master Bedroom with walk in closet, and full bath. The Smartly designed galley kitchen with walk in pantry opens to a sun drenched eating area and expansive Great Room.

The study in the front of the house is ideal for those that work from home, or a quiet respite area.

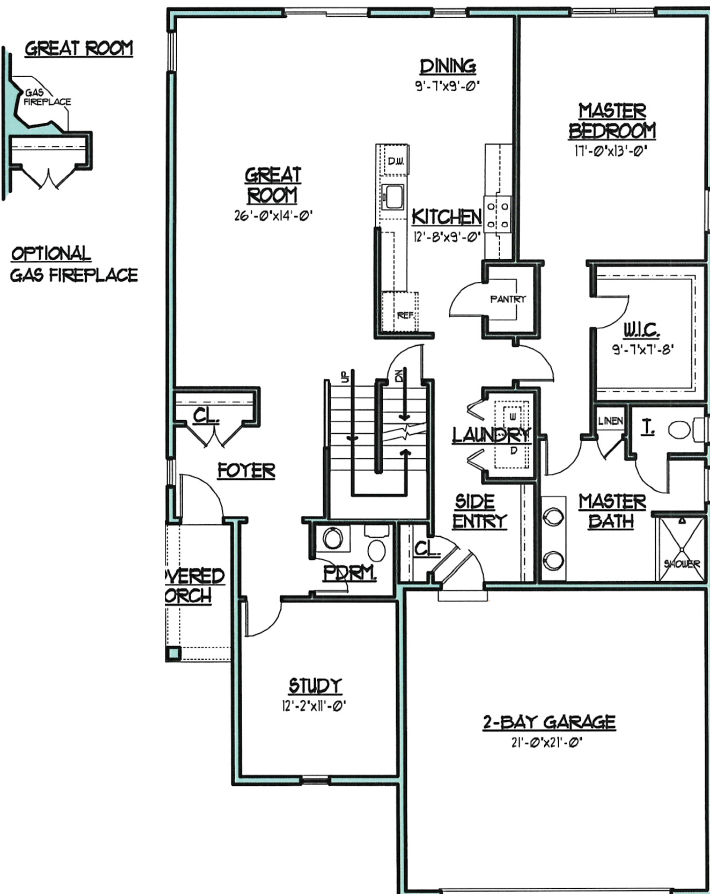
Three additional Bedrooms, Full Bath, and a loft complete the second level.

# THE DURHAM

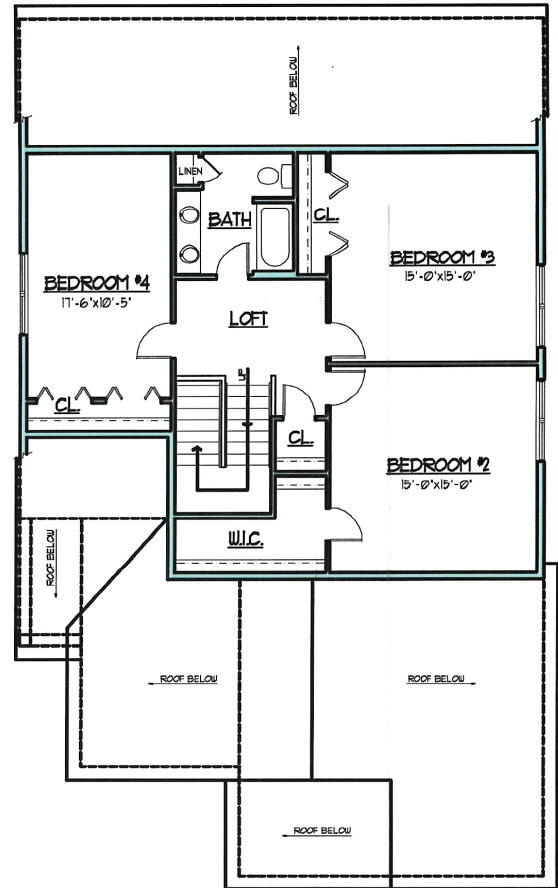
2,600 SF • 4 BEDROOMS • 2.5 BATHS



## MAIN LEVEL



## UPPER LEVEL



All information is deemed reliable but not guaranteed and is subject to change without notice. Front elevation may vary from the standard model. All floor plan dimensions are approximate & subject to field variations.



JOHN GARIS HOMES, INC.

527 Main Street, Harleysville, PA 19438